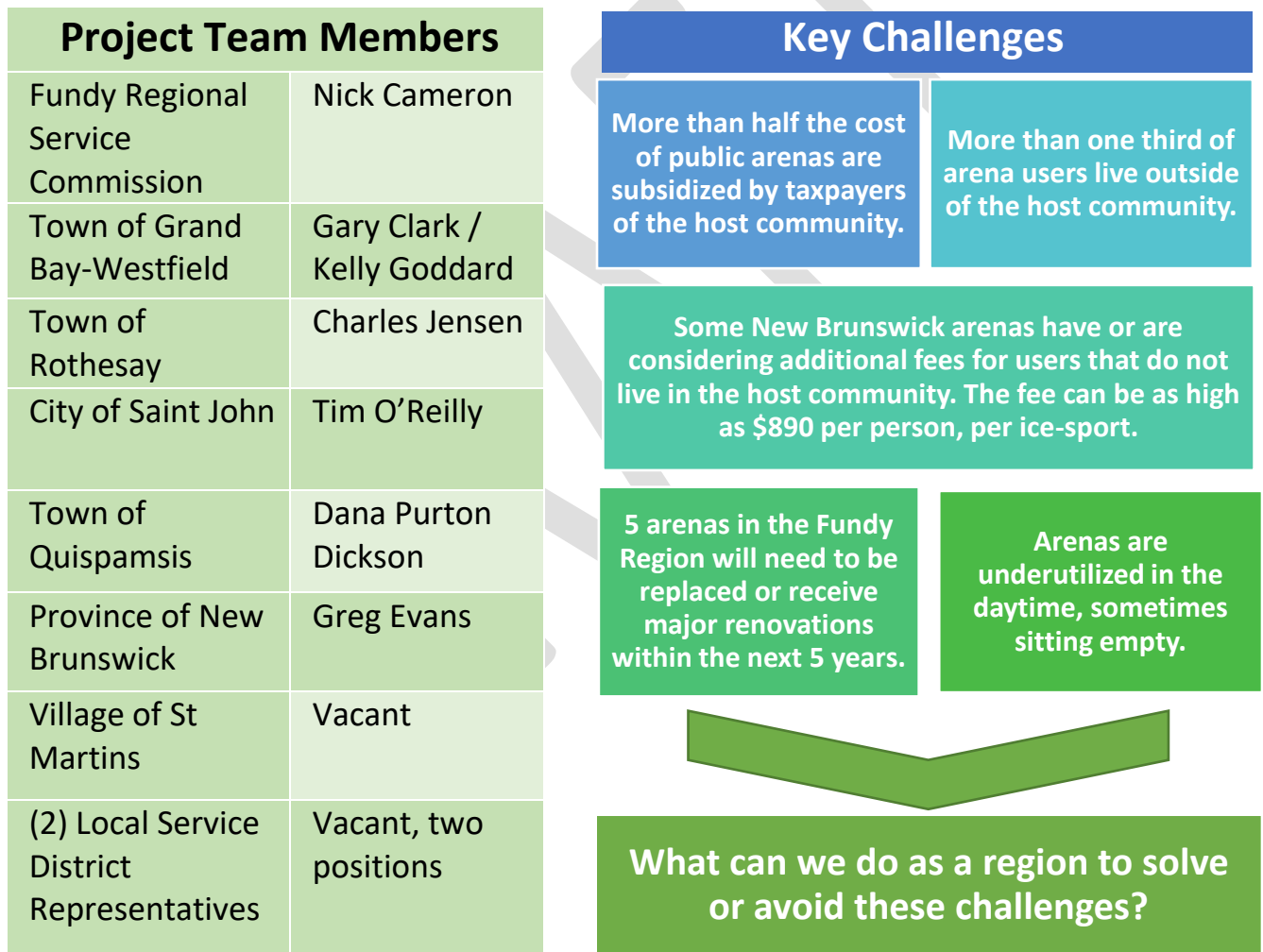


The Fundy Regional Ice Strategy



Fundy Regional Service Commission
 Commission de Services Régionaux de Fundy

The Fundy Regional Ice Strategy is an assessment of arena facilities in the greater area. It will illustrate the challenges currently facing these critical public investments and explore collaborative solutions. At this stage, the strategy is in development and we are looking for your input.



The project team has developed strategic targets to address these and other challenges facing our arenas.

Strategic Targets	Timeframe
<p>1. Information Collection and Privacy Agreement Collect residency and usage data from all registered sports at arena facilities. Non-identifying information (postal-codes) shall only be shared with public operators in the region. The privacy of users shall be protected in accordance with the Right to Information and Protection of Privacy Act.</p>	2-3 Months (November 2018)
<p>2. Regional Funding Formula Explore a service agreement and cost-sharing model for public arenas in the region that is fair and benefits all communities (see scenarios).</p>	8-12 Months (Fall 2019)
<p>3. Regional Endorsement Process Develop criteria for the Fundy Regional Service Commission to determine eligibility for endorsing ice-infrastructure projects.</p>	8-12 Months (Fall 2019)
<p>4. A Regional Standing Committee Create a standing committee that will continue to identify and develop regional collaboration opportunities at ice facilities.</p>	10-12 Months (Fall 2019)
<p>5. Accessibility and Inclusiveness Work together to improve accessibility of ice facilities, gender equity in ice-sports, and support the development of ice-parasports.</p>	On-going
<p>6. Common Policies Integrate facility policies when possible. This may include a code of conduct and mandatory skating safety equipment policies, as well as public awareness activities.</p>	On-going
<p>7. Sponsorship When considering sponsorship of arena facilities, work with Fundy Region members to investigate regional opportunities.</p>	Long-Term
<p>8. Regional Online Booking When considering online booking, work with Fundy Region members to investigate an integrated regional option.</p>	Long-Term

Regional Funding Formula: Scenarios

Some arenas have or are considering charging additional fees to those who do not live in the community. These fees can be detrimental to some families and their ability to maintain an active lifestyle through the winter season. Therefore, one of the recommendations from the Regional Ice Strategy is to explore options for a regional funding model that fairly supports all public arenas in the Fundy Region. Below are three potential scenarios.

Scenario #1: Status Quo

The River Valley Community Centre Arena currently has an additional fee of \$100 for adults that live in a local service district. The City of Saint John is considering options for a similar fee for the 2019-2020 ice season. In other communities across New Brunswick, the fee can range from \$200 to \$890 per person, per ice-sport. These fees are charged on-top of regular sports registration fees.

What are the Risks with scenario #1?

What are the Benefits with scenario #1?

Scenario #2: Rebate Model

Under a rebate model, arenas would no longer receive a subsidy from their host municipality, which is typically over half of their operating budget. Rental fees would therefore have to rise, which would cause sports registration fees to rise between 45%-60% (as much as \$350, depending on the sport). Through property taxes, municipalities and Local Service Districts could choose to offer a rebate to their residents to assist with the rise in sports registration fees.

CASE STUDY: 8th Hussars Arena, Sussex

The Town of Sussex has used a rebate model at the 8th Hussars Arena since 2013. In the first year, youth minor hockey registration fees rose by 36% and the number of players fell by 20%. In the following years, the number of players has almost fully recovered. The Town of Sussex, Village of Sussex Corner and Village of Norton offer their residents a partial rebate for the higher sports registration fees. In Sussex, the rebate is 35% for youth and 30% for adults. Surrounding LSDs chose not to offer a rebate.

Example:

A family of three has one child that plays on a Pee wee minor hockey team.	
Town of Sussex	Waterford LSD
The Town of Sussex offers a 35% rebate for youth hockey participants that reside in the town.	The LSD of Waterford chose not to offer a rebate through a property tax levy.
This family would pay \$575 to the King’s County Minor Hockey League. They would be eligible for a rebate of \$201.25 from the Town of Sussex.	This family would pay \$575 to the King’s County Minor Hockey League.

What are the Risks with scenario #2?

What are the Benefits with scenario #2?

Scenario #3: Regional Cost-Sharing Formula

Under this model, several communities may enter an agreement to share the cost of arenas. A formula would fairly determine the share for each community. The formula could be based on a number of factors including population of the community, their usage of the arenas and the level of service provided by the arenas. Communities may choose not to enter the agreement, in which case, non-resident fees may apply to their residents. In Local Service Districts, the choice to enter the agreement could be determined by a plebiscite. In municipalities, the choice could be determined by their Common Council.

CASE STUDY: Fredericton Recreation Service Agreement

In 2006, the City of Fredericton did an assessment of their recreation facilities. It found that the City needed to replace or refurbish \$60 million in recreation assets in just a few years. Further investigation also found that 40% of their users are from outside the city. Working with the surrounding communities and provincial staff, the City created a service agreement which offered recreation services to non-residents either through property taxes (\$0.03 per \$100 assessed value) or through a flat fee per person, per sport (\$890 for ice-sports).

Example:

A family of four has two children. One child plays on a minor hockey team and the other is in a figure skating club. The family owns in a home valued at \$100,000.	
Maugerville LSD	Lincoln LSD
The LSD of Maugerville chose to participate in the agreement. The cost sharing formula determined they would pay \$0.03 per \$100 of assessed property value.	The LSD of Lincoln chose not to participate in the agreement. The family would pay a fee on-top of regular sports registration fees.
This family would pay \$30 per year through their property taxes.	This family would pay the City of Fredericton \$1780 per year (\$890 per child).

What are the Risks with scenario #3?

What are the Benefits with scenario #3?

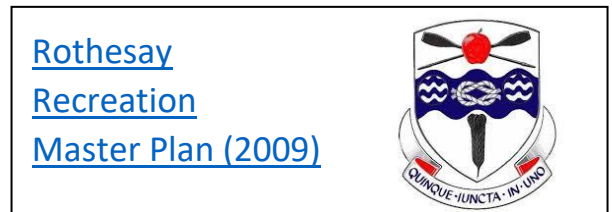
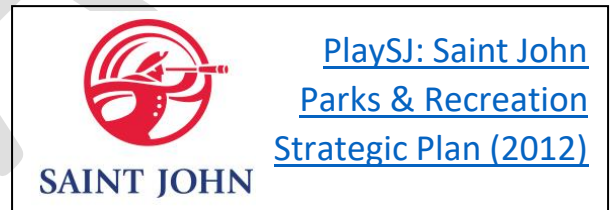
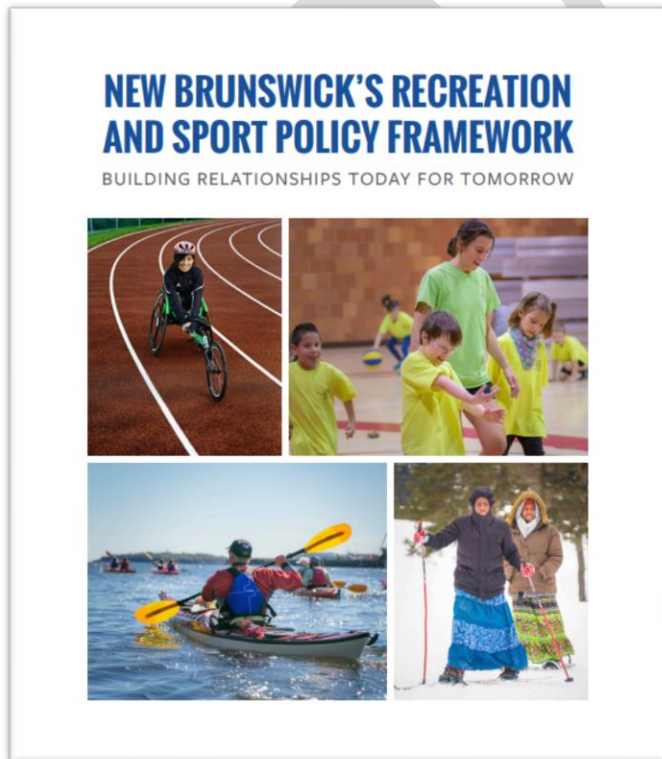
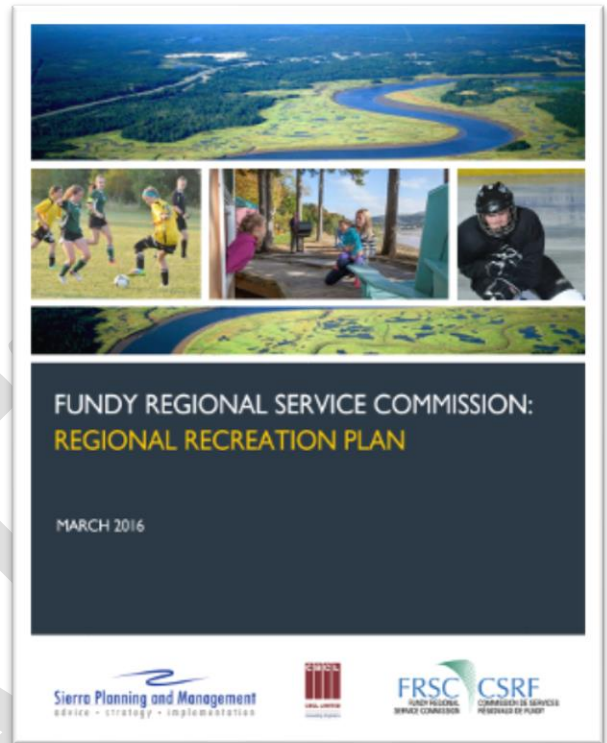
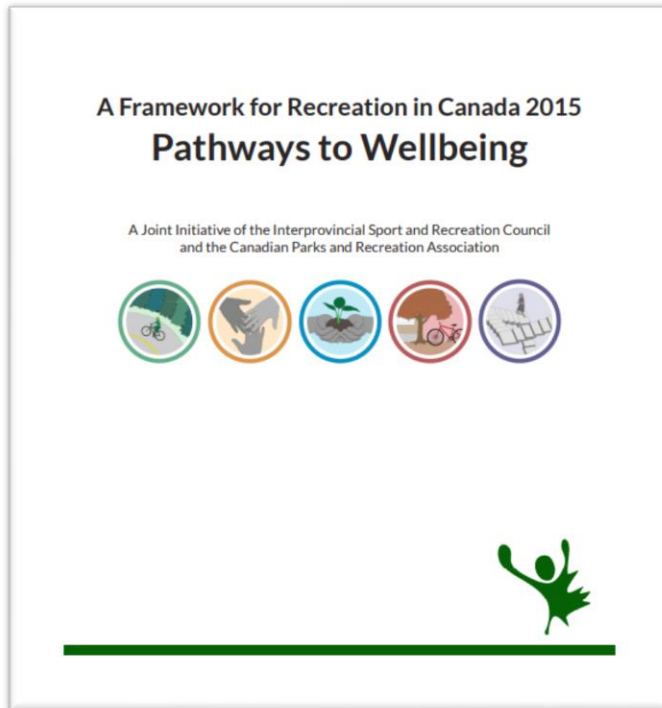
Arenas in the Fundy Region

Facility	Year Opened	End-of-Life	Primetime Rate (2017-18 Adult)*	Owner/Operator
River Valley Community Centre	1996	+20 years	\$165.22	Owned & operated by River Valley Community Centre Inc with funding from Town of Grand Bay-Westfield
Peter Murray	1967	< 5 years	\$175.57	City of Saint John
Hilton Belyea	1974	< 5 years	\$175.57	City of Saint John
Charles Gorman	1971	< 5 years	\$175.57	City of Saint John
Lord Beaverbrook Rink	1960	+10 years	\$191.30	Owned by City of Saint John, operated by the Lord Beaverbrook Rink Board of Trustees with funding from the City of Saint John
Harbour Station	1993	+20 years	\$217.31	Owned by the City of Saint John, operated by the Harbour Station Commission, with operational funding from Saint John, Quispamsis, Rothesay and Grand Bay-Westfield.
Stewart Hurley	1974	< 5 years	\$175.57	City of Saint John
Rothesay Netherwood School	1955			Rothesay Netherwood School
Rothesay Memorial	1972	< 5 years	\$147.83	Town of Rothesay
Quispamsis Memorial	1983	+10 years	\$162.31	Town of Quispamsis
plex	2011	+20 years	\$180	Town of Quispamsis
St Martins 4 Season Complex	2006	+20 years	\$110	Owned & operated by the Village of St. Martins with funding from the Village of St. Martins and the LSD of Saint Martins

*HST not included

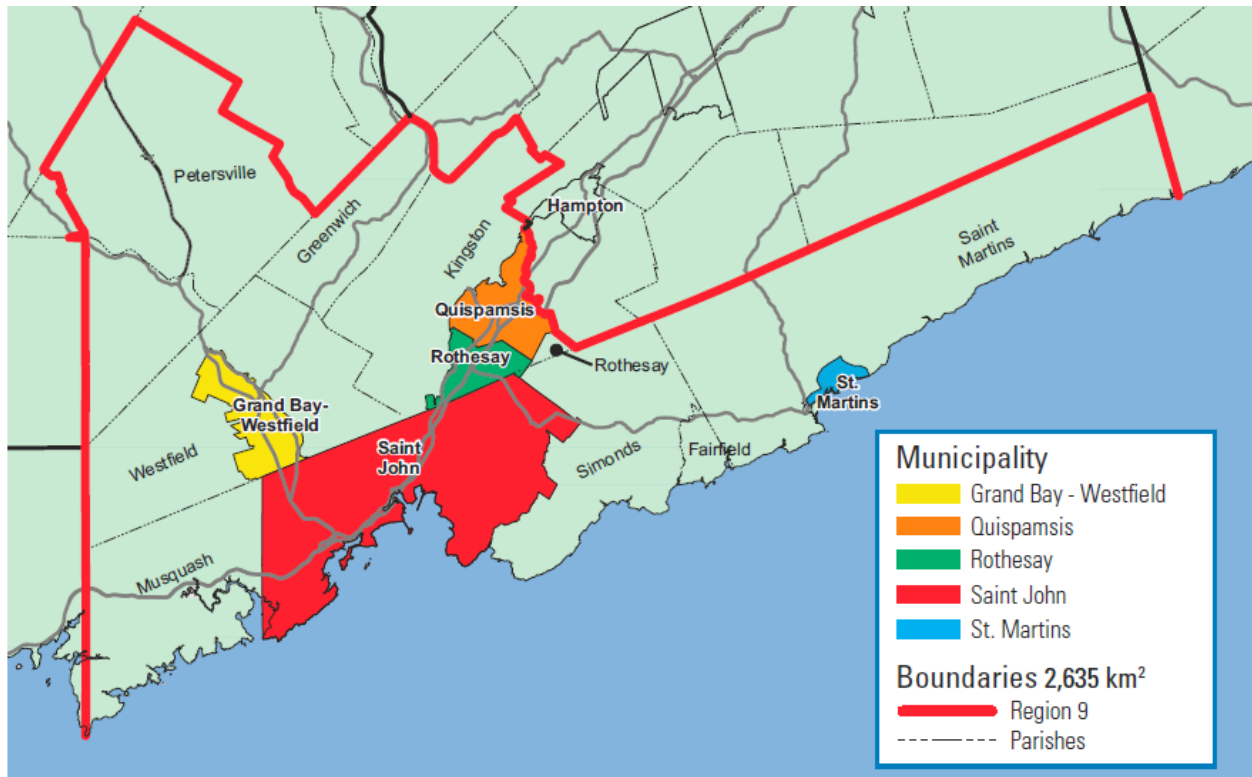
Supporting Documents

The Fundy Regional Ice Strategy is based on a number of policy and framework documents, including:



What is the Fundy Regional Service Commission?

The Fundy Regional Service Commission is a not-for-profit corporation which provides regional service delivery on a fee-for-service basis. There are five municipalities and nine local service districts in the Fundy Region. Today, the Fundy Regional Service Commission provides solid waste management, building inspection services and planning, including regional recreation planning. The board of directors is comprised of the mayors of Grand Bay-Westfield, Saint John, Rothesay, Quispamsis, and the village of St Martins, as well as four Local Service District representatives.



Project Timeline

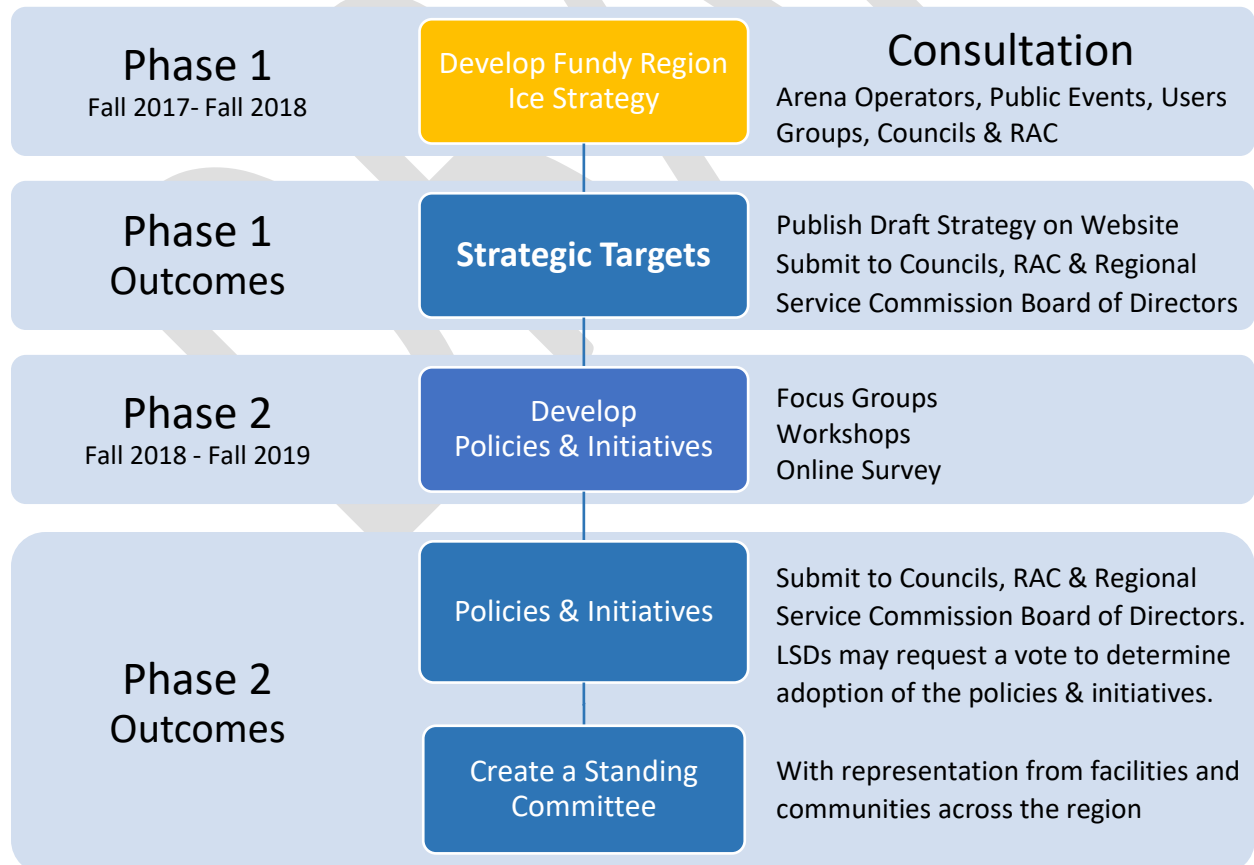


Presentation Dates Introducing the Fundy Regional Ice Strategy Project

Commission: July 12th 2017
 Quispamsis: July 18th 2017
 St Martins: August 14th 2017
 Saint John: September 6th 2017
 Grand Bay-Westfield: September 11th 2017
 Regional Advisory Committee (RAC): September 27th 2017. The RAC comprises of representatives from all nine Local Service Districts
 Rothesay: October 10th 2017

- Complete
- In Progress
- Pending

Project Process & Consultation



DRAFT - Revision Date: August 22, 2018

Send Feedback to:

Nick Cameron

Fundy Regional Service Commission

ncameron@frsc.ca

506-343-7946

DRAFT